



CHARLES RIVER
APPAREL®

SPRING RETAIL COLLECTION



FREETOWN POLO

MEN'S 3145

- 100% cotton slub knit (5.46 oz/yd²)
- Great textures of slub knit combined with woven chambray trim detailing on the inside placket, collar and side vents for a superior look and feel
- Garment dyed then old washed to create a soft, textured hand feel
- Self-fabric collar with interfacing for stability

MEN'S S-5XL

SUGGESTED RETAIL: \$33.00



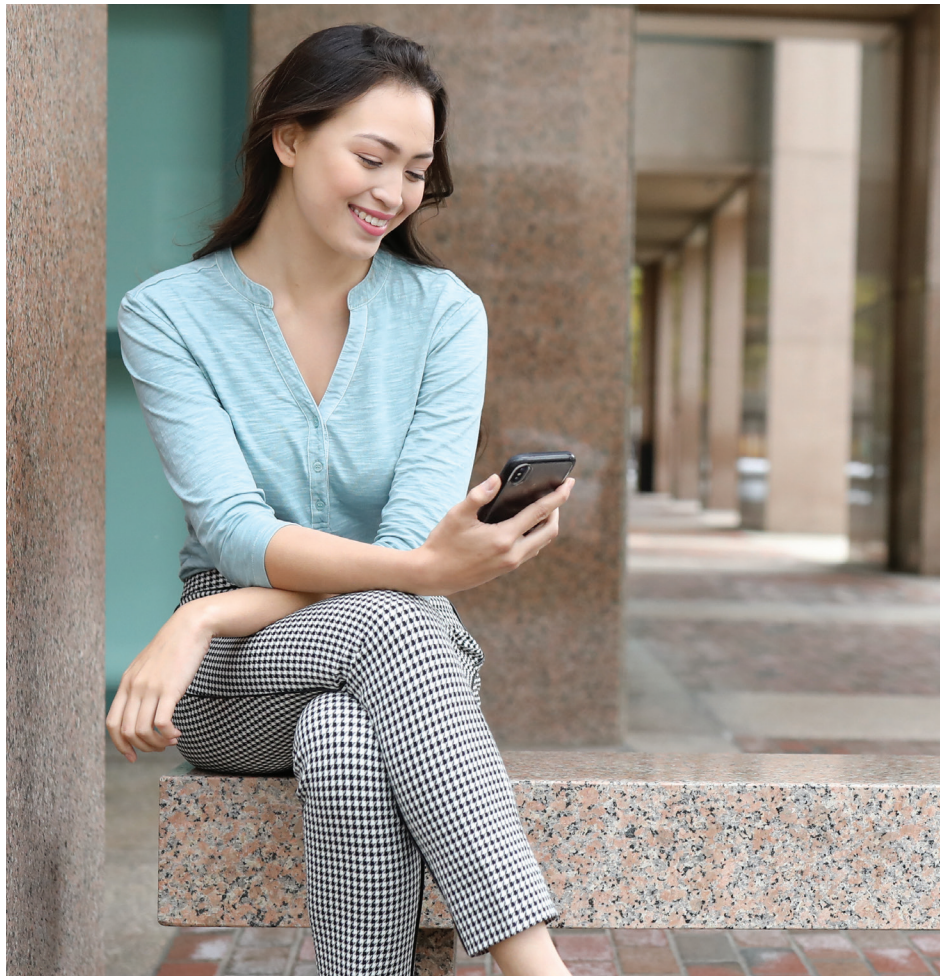
FREETOWN HENLEY

WOMEN'S 2143

- 100% cotton slub knit (5.46 oz/yd²)
- Great textures of slub knit combined with woven chambray trim detailing on the inside placket and inside collar for a superior look and feel
- Garment dyed then old washed to create a soft, textured hand feel
- Added features include a Y-neckline and curved hemline with a drop tail for added coverage

WOMEN'S XS-3XL

SUGGESTED RETAIL: \$33.00





NAUGATUCK SHIRT

MEN'S 3129

- 58% cotton/42% polyester yarn-dyed, pique knit (5.01 oz/yd²)
- Eye-catching gingham trim on inside yoke facing inside, inside cuffs and inside bottom hem adds a subtle touch of style
- Self-fabric collar with interfacing for stability
- Made to be worn whichever way you like - tucked or untucked

MEN'S S-5XL

SUGGESTED RETAIL: \$43.50



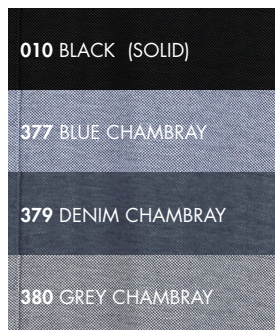
NAUGATUCK SHIRT

WOMEN'S 2128

- 58% cotton/42% polyester yarn-dyed, pique (5.01 oz/yd²)
- Eye-catching gingham trim on inside yoke facing inside and inside cuffs adds a subtle touch of style
- Drop tail hem in front and back with side vents allow for ease of movement
- Self-fabric collar with interfacing for stability
- Made to be worn whichever way you like - tucked or untucked

WOMEN'S XS-3XL

SUGGESTED RETAIL: \$43.50







WESTERLY CREW

ADULT 9016

- 60% cotton/40% polyester fleece (7.08 oz/yd²)
- Contemporary color blocked styling
- Features crew neck styling with rib knit trim on neckline, cuffs and hem
- Also features a relaxed and comfortable drop shoulder design

ADULT XXS-3XL

SUGGESTED RETAIL: \$36.50



AVAILABLE NOW!

456 BLUSH/WHITE/LT. GREY

AVAILABLE NOW!

486 LT.GREY/WHITE/NAVY

AVAILABLE 5/1

577 LT.BLUE/WHITE/NAVY





SHERPA CREW

ADULT 9028

- 100% polyester Sherpa fleece (8.26 oz/yd²)
- Lightweight textured fleece offers warmth without the weight
- Features include crew neck styling, with rib knit on neckline, cuffs and hem
- Drop shoulder for a relaxed fit

ADULT XXS-3XL

SUGGESTED RETAIL: \$48.00







OXFORD QUARTER ZIP

ADULT 9070

- 100% polyester fleece (6.78 oz/yd²)
- Style features quarter zip styling with mock neck with contrast fleece on inside of collar, faux leather zipper pull, and tunic length
- Relaxed and comfortable drop shoulder
- Pouch pocket to keep your hands warm
- Lightweight fleece offers warmth without the weight

ADULT XXS-3XL

SUGGESTED RETAIL: \$50.00







*CONVENIENTLY PACKS INTO
ITS OWN BACK POCKET*



FANNY PACK-N-GO®

WOMEN'S 5107 | MEN'S 9107

- 100% **SOFTEX™** Polyester (2.06 oz/yd²)
- **Wind & water-resistant**, lightweight
- Packs into its own back pocket for easy storage, pocket features an adjustable strap with snaps to wear as a belt bag fanny pack or on the shoulder, ideal for carrying on the move
- Full zip styling with three-piece hood and inner collar
- Women's style features silver zipper teeth, a feminine hip-length silhouette with shock-cord waistline and a drop hem for added coverage
- Men's style features clear zipper teeth

WOMEN'S XS-3XL | MEN'S S-3XL

SUGGESTED RETAIL: \$51.00

010 BLACK	080 WHITE
040 NAVY	115 GREY







COLOR BLOCKED NEW ENGLANDER® RAIN JACKET

WOMEN'S 5192

- 100% Polyurethane bonded to a woven backing and taffeta nylon in sleeves (3.98 oz/yd²)
- **Wind & waterproof** with heat sealed seams for weather protection
- Features modern color blocked styling
- Lined with mesh in body and underarm vents to allow for air-flow circulation
- 2-way zipper for freedom of movement and full length wind flap for protection from the elements
- Taffeta lining in sleeve for easy on/off
- ESP System (Embroidery Stow-away Pocket) for easy decorating access

WOMEN'S XS-3XL

SUGGESTED RETAIL: \$66.00



440 NAVY/ROSE GOLD/
OLIVE





NEW ENGLANDER® RAIN JACKET (METALLIC)

WOMEN'S 5193

- 100% Polyurethane bonded to a woven backing and taffeta nylon in sleeves (3.98 oz/yd²)
- **Wind & waterproof** with heat sealed seams for weather protection
- Features fashionable metallic appearance
- Lined with grey mesh in body and underarm vents to allow for air-flow circulation
- 2-way zipper for freedom of movement and full length wind flap for protection from the elements
- 3M™ Reflective trims across front & back provide high visibility
- Taffeta lining in sleeve for easy on/off

WOMEN'S XS-3XL

SUGGESTED RETAIL: \$60.00







NEW ENGLANDER® FLORAL PRINTED RAIN JACKET

WOMEN'S 5194

- 100% polyurethane bonded to a woven backing and taffeta nylon in sleeves (3.98 oz/yd²)
- **Wind & waterproof** with heat sealed seams for weather protection
- Features floral printed outer shell
- Lined with mesh in body and underarm vents to allow for air-flow circulation
- 2-way zipper for freedom of movement and taffeta nylon sleeve lining
- 3M™ Reflective trims across front & back provide high visibility
- Covered front zippered pockets to secure valuables

WOMEN'S XS-3XL

SUGGESTED RETAIL: \$79.00







NEW ENGLANDER® RAIN JACKET WITH PRINTED LINING

WOMEN'S 5197

- 100% polyurethane bonded to a woven backing and taffeta nylon in sleeves (3.98 oz/yd²)
- **Wind & waterproof** with heat sealed seams for weather protection
- Features floral printed outer shell
- Lined with mesh in body and underarm vents to allow for air-flow circulation
- 2-way zipper for freedom of movement and taffeta nylon sleeve lining
- 3M™ Reflective trims across front & back provide high visibility
- Covered front zippered pockets to secure valuables

WOMEN'S XS-3XL

SUGGESTED RETAIL: \$66.00







NEW COLOR
NEW ENGLANDER® RAIN JACKET

WOMEN'S 5099

- 100% polyurethane bonded to a woven backing and taffeta nylon in sleeves (3.98 oz/yd²)
- **Wind & waterproof** with heat sealed seams for weather protection
- Lined with grey mesh in body and front yoke and underarm eyelets to allow for air-flow circulation
- 2-way zipper for freedom of movement and full length wind flap for protection from elements
- 3M™ Reflective trims across front & back provide high visibility

WOMEN'S XS-3XL

SUGGESTED RETAIL: \$57.50

434 MAUVE





CHARLES RIVER
APPAREL®

CHARLESRIVERAPPAREL.COM