



CHARLES RIVER
APPAREL®

NON PROFIT

TRU PERFORMANCE TEE

WOMEN'S 2920 | MEN'S 3920

- 100% Polyester Interlock tee (4.42 oz/yd2, white is 5.31 oz/yd2)
- Moisture Wicking and Anti-Microbial fabric properties
- A solid version of our popular space-dyed performance fabric
- Features side slits for increased mobility and a heat-sealed back neck label for comfort

WOMEN'S **XS-3XL** | MEN'S **S-5XL**

010 BLACK

080 WHITE



SPACE DYE PERFORMANCE PULLOVER

WOMEN'S 5763 | MEN'S 9763

- 100% polyester yarn dyed jersey knit in a unique space dye effect (3.98 oz/yd²)
- TopShield™ Technology and Moisture Wicking and Anti-Microbial fabric properties
- Ultraviolet Protection Factor of 20+ (blocking up to 95% of UV radiation)
- Raglan sleeve styling for increased range of motion

WOMEN'S XS-3XL | MEN'S XS-4XL

| | |
|------------|------------|
| 010 BLACK | 060 RED |
| 020 FOREST | 070 ROYAL |
| 030 MAROON | 115 GREY |
| 040 NAVY | 250 ORANGE |
| 050 PURPLE | |



FREETOWN HENLEY

WOMEN'S 2143

- 100% Cotton Slub Knit (5.46 oz/yd2, 185GSM)
- Great textures of slub knit with woven chambray trim detailing for a superior look and feel
- Garment dyed then old washed to create a soft, textured hand feel
- Added features include a Y-neckline and curved hemline with a drop tail for added coverage

WOMEN'S **XS-3XL** | MEN'S **S-3XL**

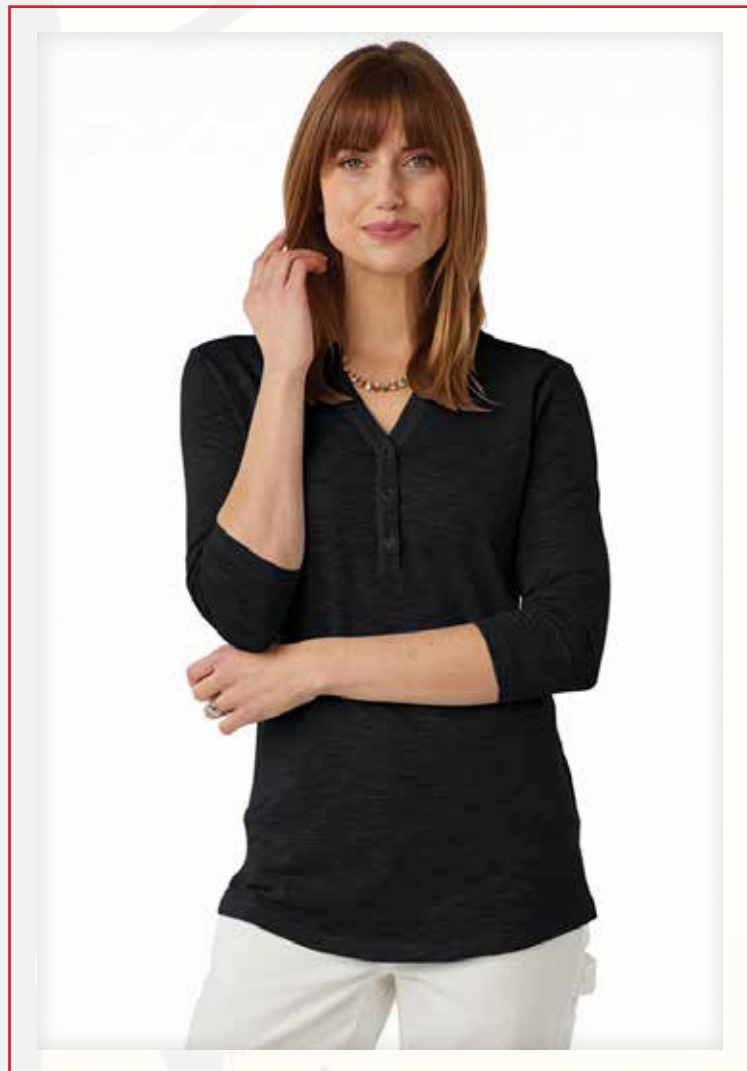
010 BLACK

201 CHARCOAL

040 NAVY

371 BAY

080 WHITE



FREETOWN POLO

MEN'S 3145

- 100% Cotton Slub Knit (5.46 oz/yd2, 185GSM)
- Great textures of slub knit with woven chambray trim detailing for a superior look and feel
- Garment dyed then old washed to create a soft, textured hand feel

WOMEN'S XS-3XL | MEN'S S-3XL

010 BLACK

201 CHARCOAL

040 NAVY

371 BAY

080 WHITE



SEAPORT QUARTER ZIP

WOMEN'S 5057 | MEN'S 9057

- 75% Polyester / 19% Rayon / 6% Spandex double knit
275GSM = 8.11 oz/yd2
- Fabric has 4-way stretch construction for greater range
of motion
- Modern mock neck ¼ zip
- Raglan sleeves

WOMEN'S **XS-3XL** | MEN'S **S-3XL**

010 BLACK

040 NAVY

115 GREY



SEAPORT FULL ZIP HOODIE

WOMEN'S 5091 | MEN'S 9091

- Made from our high-performance CFlex™, 81% polyester/15% Rayon/4% Spandex double knit (8.11 oz/yd2)
- CFlex™ fabric has 4-way stretch construction for greater range of motion
- Full-zip styling for easy on/off and patch pockets to keep your valuables close and safe
- Features a three-piece hood with drawstrings for coverage against the weather and drop tail hem for added coverage
- Color block styling, accent black welding for Black/Grey and Grey/Black and grey welding on Navy/Grey

WOMEN'S **XS-3XL** | MEN'S **S-3XL**

002 GREY/ BLACK

006 BLACK/GREY

096 NAVY/GREY



FANNY PACK-N-GO®

WOMEN'S 5107 | MEN'S 9107

- 100% Softex™ Polyester (2.06 oz./yd2)
- Packs into a back pocket with a strap and pocket so you can store your most valuable possessions
- Added features include a full zip hip-length, Softex™ fabric, three-piece hood with draw string and inner collar

WOMEN'S XS-3XL | MEN'S S-3XL

010 BLACK

080 WHITE

040 NAVY

115 GREY



PACK-N-GO® PULLOVER
ADULT 9904

- 100% Softex™ Polyester (2.06 oz/yd²)
- **Wind & water-resistant**, lightweight
- Packs into its own front pouch pocket with zipper closure for easy packing on the go
- Extended zipper at the neck for easy on/off
- Features a hood with adjustable shockcord drawstring

ADULT XS-5XL*
(*4XL & 5XL AVAILABLE IN BLACK AND NAVY ONLY)

| | |
|------------|-------------------|
| 010 BLACK | 089 COLUMBIA BLUE |
| 020 FOREST | 115 GREY |
| 030 MAROON | 228 AQUA |
| 040 NAVY | 255 CORAL |
| 050 PURPLE | 284 OLIVE |
| 060 RED | 322 MINT |
| 070 ROYAL | 335 HOT PINK |
| 080 WHITE | 364 NEON YELLOW |



PACK-N-GO® PULLOVER YOUTH 8904

- 100% Softex™ Polyester (2.06 oz/yd²)
- **Wind & water-resistant**, lightweight
- Packs into its own front pouch pocket with zipper closure for easy packing on the go
- Extended zipper at the neck for easy on/off

ADULT S-XL

| | |
|------------|------------|
| 010 BLACK | 050 PURPLE |
| 020 FOREST | 060 RED |
| 030 MAROON | 070 ROYAL |
| 040 NAVY | |



COLOR BLOCKED PACK-N-GO®

ADULT 9012

- 100% Softex™ polyester (2.06 oz/yd2)
- Wind & water-resistant, lightweight
- Packs into its own front pouch pocket with zipper closure for easy packing on the go
- Half-zip Anorak styling
- Color block styling for updated look and feel
- Features a 3-piece hood with adjustable shockcord drawstring and elastic cuffs

ADULT **XXS-3XL**

043 NAVY/ FOREST

670 RED/ ROYAL

048 NAVY/ WHITE

680 LT GREY/ WHITE

620 ROSE GOLD/ OLIVE



CONWAY FLATBACK RIB PULLOVER

WOMEN'S 5998 | MEN'S 9910

- 60% Cotton/ 40% Polyester Flat Back Rib Knit
- Contrast stitching for a modern yet sporty feel
- Low profile on-seam pockets
- Lightweight transitional piece with abundant layering options

WOMEN'S **XS-3XL** | MEN'S **S-3XL**

010 BLACK

240 NAVY HEATHER

110 CHARCOAL HEATHER

518 IVORY HEATHER



CROSSWIND QUARTER ZIP SWEATSHIRT

ADULT 9359

- 60% cotton/40% polyester ring-spun yarn sweatshirt knit (8.26 oz/yd²)
- Relaxed quarter-zip sweatshirt styling with convenient on-seam pockets
- Rib knit trim design details on hem & cuffs
- Durable antique nickel-finished metal zipper

ADULTS **XXS-4XL**

| | |
|------------|---------------------------|
| 010 BLACK | 080 WHITE |
| 020 FOREST | 111 DARK CHARCOAL HEATHER |
| 030 MAROON | 114 OXFORD HEATHER |
| 040 NAVY | 228 AQUA |
| 050 PURPLE | 322 MINT |
| 060 RED | 340 PREPPY PINK |
| 070 ROYAL | 358 BRIGHT CORAL |



QUARTER ZIP COLOR BLOCKED HEATHERED FLEECE

WOMEN'S 5014 | MEN'S 9014

- 100% polyester sweater fleece brushed on the inside for softness (8.26 oz/yd²)
- Yarn-dyed to produce a unique heathered appearance
- Color blocking for added design appeal
- Women's version features princess seams for a feminine silhouette
- Ideal multi-seasonal transitional pieces
- Quarter-zip pullover styling for bulk free all day comfort

WOMEN'S **XS-3XL** | MEN'S **S-3XL**

601 CHARCOAL HEATHER
/ LIGHT GREY HEATHER

629 OATMEAL HEATHER
/ CHARCOAL HEATHER

605 LIGHT GREY HEATHER
/ BLUE HEATHER



HEATHERED FLEECE JACKET

WOMEN'S 5493 | MEN'S 9493

- 100% Polyester sweater fleece brushed on the inside for softness (8.26 oz./yd2)
- Yarn-dyed to produce a unique heathered appearance
- Knit binding adds a unique design detail
- Ideal multi-seasonal transitional piece
- Welded front pockets

WOMEN'S **XS-3XL** | MEN'S **S-3XL**

104 BLACK HEATHER

293 BLUE HEATHER (W's Only)

129 OATMEAL HEATHER

514 LIGHT GREY HEATHER



CLASSIC SOLID PULLOVER

ADULT 9905

- 100% River Tec™ Nylon Taffeta (2.06 oz./yd2)
- Wind & water-resistant
- Lightweight & packs into its own pouch pocket for traveling on the go
- Lined with 100% Cotton Flannel for added comfort and warmth

WOMEN'S XS-3XL | MEN'S XS-3XL

| | |
|--------------|------------|
| 010 BLACK | 060 RED |
| 020 FOREST | 070 ROYAL |
| 030 MAROON | 080 WHITE |
| 039 CARDINAL | 150 YELLOW |
| 040 NAVY | 250 ORANGE |
| 050 PURPLE | |



AXIS SOFT SHELL JACKET

WOMEN'S 5317 | MEN'S 9317

- 97% polyester/3% spandex stretch fabric (5.16 oz/yd²)
- **Breathable & water-resistant** jacket is our lightest soft shell jacket
- Flexible, lightweight fabric allows for wide range of motion with a non-bulky fit
- Stand up collar with chin guard and full length wind flap provides protection from the elements
- Women's version features princess seams for a feminine silhouette and an inner knit cuff hand warmer with thumbholes

MEN'S S-3XL | WOMEN'S XS-3XL

010 BLACK

080 WHITE WOMEN'S ONLY

040 NAVY

204 STEEL GREY MEN'S ONLY



NEW ENGLANDER® RAIN JACKET WOMEN'S 5099

- 100% polyester polyurethane bonded to a woven backing and taffeta nylon in sleeves (3.98 oz/yd²)
- **Wind & waterproof** with heat sealed seams for weather protection
- Lined with grey mesh in body & front yoke and underarm vents to allow for air-flow circulation
- 3M™ Reflective trims across front & back provide high visibility

WOMEN'S XS-3XL



NEW ENGLANDER® RAIN JACKET

MEN'S 9199

- 100% polyester polyurethane bonded to a woven backing and taffeta nylon in sleeves (3.98 oz/yd²)
- **Wind & waterproof** with heat sealed seams for weather protection
- Lined with contrast color mesh in body & front yoke and underarm vents to allow for airflow circulation
- 2-way zipper for freedom of movement and full length wind flap for protection from the elements
- 3M™ Reflective trims across front & back provide high visibility

MEN'S XS-5XL

| | |
|----------------------|--------------------|
| 010 BLACK/GREY | 139 TAUPE/NAVY |
| 031 MAROON/BLACK | 150 YELLOW/NAVY |
| 046 TRUE NAVY/YELLOW | 264 TRUE NAVY/GREY |
| 060 RED/GREY | 028 FOREST/ GREY |






CHARLES RIVER
APPAREL