

2160 WOMEN'S MICROSTRIPE POLO

WOMEN'S SIZES XS-3XL

- :: Moisture Wicking Technology
- :: 100% smooth knit polyester
- :: Coordinates with Men's style 3160



Taped neckline for clean, finished appearance

Rib knit collar with tipping

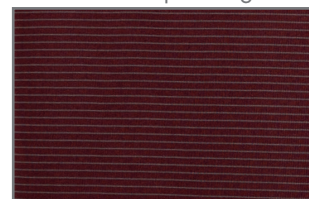
Classic 3-button placket with 2-tone buttons

Set-in sleeve design

Moisture wicking with TopShield™ moisture management

Fitted styling

Subtle microstripe design



BACK VIEW

COMFORT & CONVENIENCE

- :: Made exclusively with TopShield™ moisture management treatment. This hi-tech treatment applied to the fabric wicks moisture away from your body, keeping you comfortable and dry
- :: Incredibly lightweight and breathable
- :: Microstripe design offers a slimming appearance
- :: Extra button conveniently located on inner side seam label
- :: Tagless neck labeling and self-binding at collar prevents chafing against skin
- :: Suitable for corporate wear and weekend wear
- :: Coordinates with Men's style 3160

FABRIC

100% smooth knit polyester 4.13 oz/yd2 (equiv. to 6.88 oz/lyd, 140gsm)

SIZES

Women's Sizes XS–3XL

COLORS

010 Black, 030 Maroon, 040 Navy, 060 Red, 262 Blue Fog

GARMENT CARE

Machine wash cold separately. Do not use fabric softeners. Only non-chlorine bleach when needed. Tumble dry low. Cool iron if needed.

010 BLACK

030 MAROON

040 NAVY

060 RED

262 BLUE FOG

MICROSTRIPE POLO WOMEN'S 2160	XS	S	M	L	XL	2XL	3XL	TOLERANCE
BODY LENGTH measure from neck (cb neck)	24¾	25¼	25¾	26½	26¾	27¼	27¾	½ +/-
CHEST WIDTH 1 inch below armhole	17¼	18¼	19¼	20¾	22½	24½	26½	½ +/-
BOTTOM OPENING WIDTH RELAXED 1/2	185/8	195/8	205/8	221/8	237/8	257/8	277/8	½ +/-
SLEEVE LENGTH FROM CB short	15	15½	16	16½	17	17½	18	½ +/-

KEY TO COMMONLY ABBREVIATED SPEC INFORMATION (ALL MEASUREMENTS ARE IN INCHES)

CB = CENTER BACK

CHEST 1 INCH DOWN = MEASURE THE FRONT OF THE GARMENT 1 INCH DOWN FROM THE ARMHOLE

1/2 = MEASURE ONLY THE FRONT OF THE GARMENT, THEN DOUBLE THAT MEASUREMENT TO GET THE TOTAL CIRCUMFERENCE

RELAXED = DO NOT STRETCH THE GARMENT IF IT HAS ELASTIC TO MEASURE, SIMPLY LEAVE THE ELASTIC RELAXED

STRETCHED = STRETCH THE GARMENT IF IT HAS ELASTIC TO MEASURE, MEASURE STRETCHED